

A dragonfly has two big compound eyes. It also has six legs, a thick abdomen, a big head, and four wings. A dragonfly is found where plants grow in water. A dragonfly nymph eats mosquito larvae, water lice, worms, tadpoles, and small frogs or fish. An adult dragonfly catches mosquitoes and small insects in the air, and eats them. They don't bite or sting people.

By: Marina

These cards were created by second grade students from Alice B. Beal School, a public school in Springfield, Massachusetts. They reflect the children's study of insects.

Alice B. Beal Magnet School:
An Expeditionary Learning School



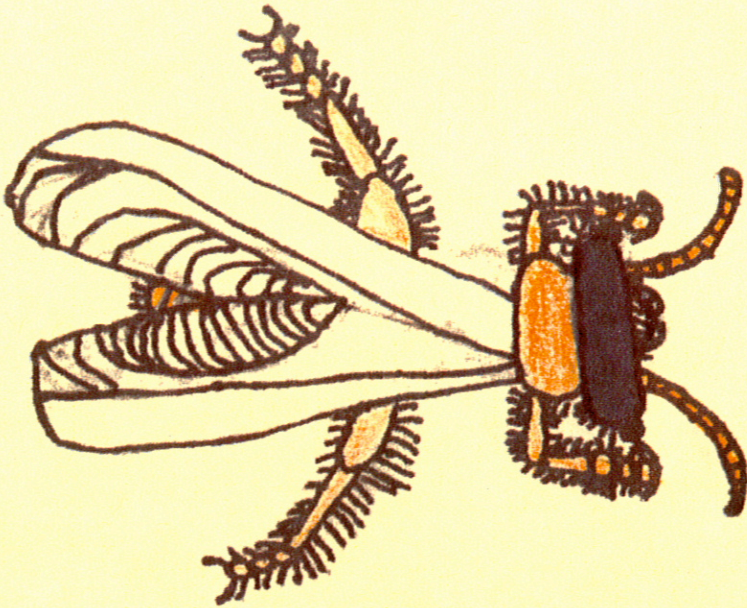
Mole crickets live underground and it make "Y"-shaped tunnels. They like warm, dark, and cozy places. Sometimes you might find them in the dirt in your cellar. They like to eat plants, aphids, and other small insects. The mole cricket is very shy. To see one you need to listen for its song and use a flashlight that's not too bright. You need to be very quiet when approaching them.

By:

D'Andre

These cards were created by second grade students from Alice B. Beal School, a public school in Springfield, Massachusetts. They reflect the children's study of insects.

Alice B. Beal Magnet School:
An Expeditionary Learning School



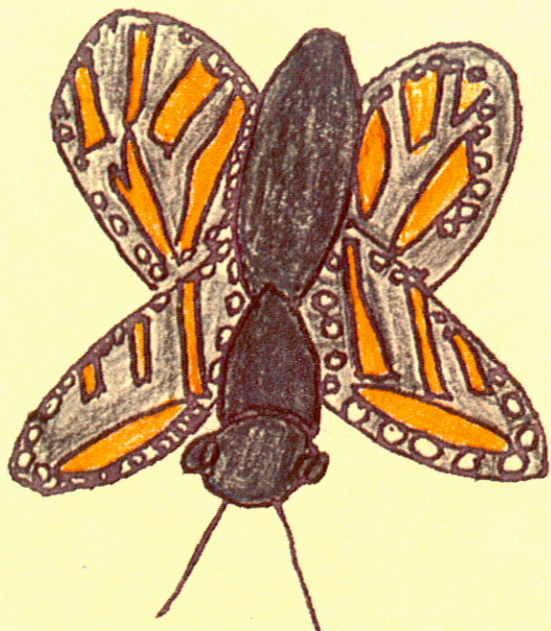
Termites live in dark nests and tunnels. They are whitish and when you look at them you can almost see through them. Termites mostly eat trees and other things made of wood. They also eat paper, cloth and carpets. They can damage houses and buildings.

By:

Ryan

These cards were created by second grade students from Alice B. Beal School, a public school in Springfield, Massachusetts. They reflect the children's study of insects.

Alice B. Beal Magnet School:
An Expeditionary Learning School

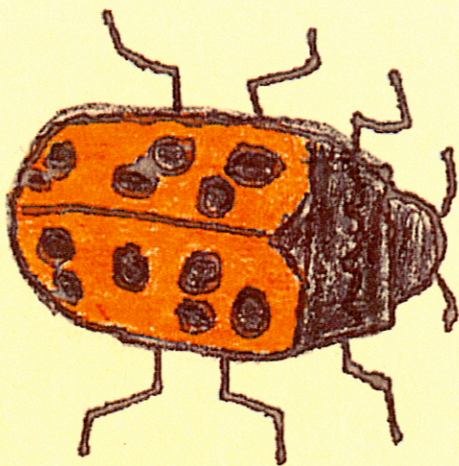


Monarchs are found all over Texas, the U.S., Southern Canada, and Mexico. Monarchs are found wherever milkweed grows. Monarchs are orange and black to scare away enemies. The female monarch has black veins on its wings. The male has a spot on two of its wings. The adult feeds on flower nectar. Monarch butterflies are powerful flyers and migrate over long distances. In Australia the monarch is called "the wanderer."

By: Faith

These cards were created by second grade students from Alice B. Beal School, a public school in Springfield, Massachusetts. They reflect the children's study of insects.

Alice B. Beal Magnet School:
An Expeditionary Learning School

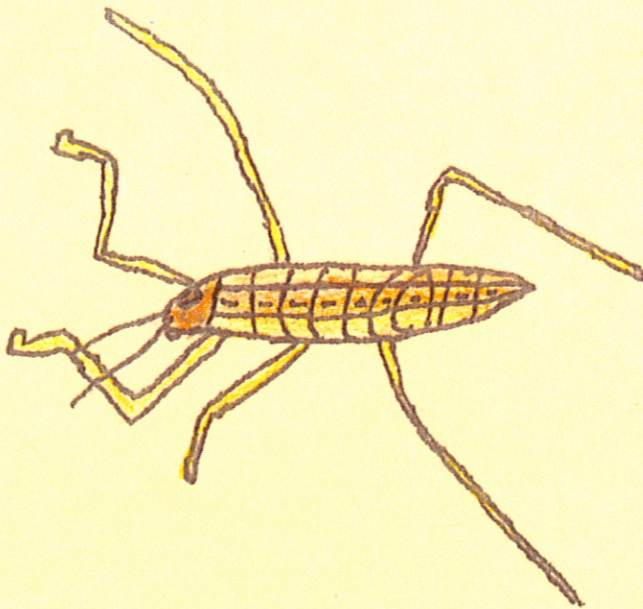


Lady bugs are usually yellow, orange, or red with small black spots on their bodies. Lady bugs have six legs, and are found in gardens. Lady bugs are found in North America. They have yellow liquid with a bad smell to protect them. A lady is helpful because it eats aphids.

By: *Tajour*

These cards were created by second grade students from Alice B. Beal School, a public school in Springfield, Massachusetts. They reflect the children's study of insects.

Alice B. Beal Magnet School:
An Expeditionary Learning School



Water striders are dark brown or black. Water striders live on the surface of slow streams, marshes, and quiet ponds. They can be found walking on water. Water striders eat insects that are on the surface of the water.

Their favorite foods are mosquito larvae and dragonflies.

By:

Raymond

These cards were created by second grade students from Alice B. Beal School, a public school in Springfield, Massachusetts. They reflect the children's study of insects.

Alice B. Beal Magnet School:
An Expeditionary Learning School



Mosquitoes have long, soft bodies, long proboscis and skinny legs. They are about 1/2 inch long. They are mostly found in swamps and ponds at sunrise and sunset. The male mosquito looks for pollen and fruit juices. The female looks for the blood of animals and humans. Some kinds of mosquitoes carry diseases like Malaria and can give it to people. Malaria kills over three million people each year.

By: Tyler

These cards were created by second grade students from Alice B. Beal School, a public school in Springfield, Massachusetts. They reflect the children's study of insects.

Alice B. Beal Magnet School:
An Expeditionary Learning School