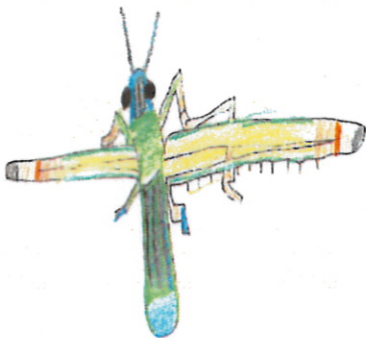


Grasshoppers



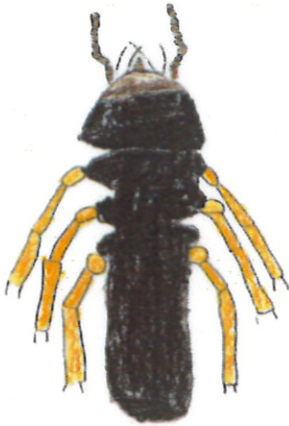
Grasshoppers eat crops of alfalfa, clover, cotton, and corn. You can find grasshoppers everywhere in the world. Grasshoppers have six legs, three body parts, long wings, four large eyes on their head, two feelers on their head, and two strong back legs. The enemies of grasshoppers are beetles, mice, snakes and spiders. Grasshoppers can jump 200 times their length. Grasshoppers spit a brown liquid to keep enemies away. The life cycle of a grasshopper is egg, nymph, adult.

The House Fly



The house fly can be found in most parts of the world. House flies lay their eggs in rotten food or smelly vegetables. The larva lives in soil. Houseflies eat all kinds of food. Male house flies suck up nectar from flowers. They do not have a mouth they have a tube to eat with. House flies have a head, thorax, abdomen, six legs, and a pair of wings. The adult is about 1/4 inch long. House flies lay hundreds of eggs. House flies help clean up by eating dead animals. Adult house flies do not bite. They spit their saliva on human food. Some house flies make buzzing noises. House flies move quickly through the air. House flies have little holes in them. The life cycle of a house fly is egg, larva, pupa, adult.

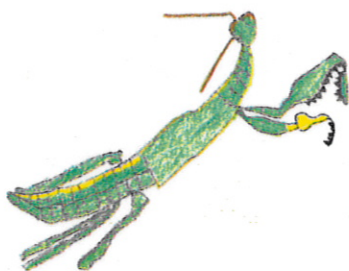
Termites



Termites live in Africa, Australia, and parts of America. They make nests in trees and they also live in big mounds. Termites life cycle is egg, nymph, larva, adult. Termites eat wood, paper, cloth, some sorts of fungus, plants, soil, lumber, wallpaper, plastics and fabric. Termites are blind, have strong legs and strong huge jaws. They have pale or black bodies, a head, thorax, abdomen, six legs and two feelers. They can destroy anything made of wood, even a house.

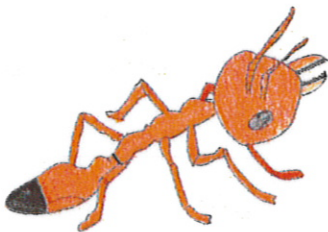
Exploding termites explode themselves to attack their attackers. Their predators are ants. Their mounds can be 20 feet or higher. They are also known as the white ants.

Interesting Facts About Mantids



The Praying Mantis lives in most parts of the world and it can be found in tropical, subtropical and warm temperate areas of the world. The Praying Mantis eats crickets, grasshoppers, moths, flies, katydids, and other mantids. The mantid has a head, thorax, abdomen, and a metathorax. It also has sharp claws, 2 antennae, compound eyes, mandible jaws, grasping front legs, 4 wings, and walking legs. The Praying Mantis does not go through a complete metamorphosis. It only goes through 3 stages and those stages are Egg, Nymph, Adult. There are about 1,700 varieties of mantids. The Praying Mantis bites the back of their victims neck to paralyze them.

Fire Ants



Fire ants like to eat earthworms, flies, beetles, and each other. Fire ants live on the continents of North America and South America. You can find fire ants under rocks and in rotting wood. You can find fire ants in sand. The fire ant has a head, thorax, abdomen and six legs. It has 1 set of jaws and 1 set of antennae. Right before the abdomen it has a narrow waist. The legs come off of the thorax. You can tell the difference between an ant and a fire ant by their copper heads. The queen fire ant lays up to 9,000 eggs a week, the queen ant lays up to 1,500 eggs a day. An army of fire ants can destroy your lawn just like grubs. The life cycle of the fire ant is egg, larva, pupa, adult. The fire ant goes through a complete metamorphosis.

TERMITES



The termite lives in Africa, Australia, South America, Europe, and North America. They live underground. Termites are black and brown in color. Their heads are big and hard. Their legs and jaws are strong. Their bodies are soft. The termite starts as an egg. The queen lays the eggs in the center of the nest. She can lay thousands of eggs each day. The egg becomes larva. The larva changes into a nymph. then it's an adult termite. The termite eats wood and paper cloth and plants.

Fireflies



Adult fireflies eat other insects. Fireflies eat pollen and other flower parts. Some fireflies don't eat at all.

Fireflies can be found in woods and backyards.

Fireflies' larvae can be found in tree bark or under wet leaves. Fireflies can be found in the U.S.A. Most fireflies are black or brown. Fireflies have red or yellow marks.

Many fireflies make light with the lantern on their abdomen.

Fireflies have flat bodies.

Fireflies have two antennae.

Fireflies have two large eyes.

Fireflies have a head, thorax, and an abdomen. Fireflies are really beetles, they are not flies. Fireflies are nocturnal.

The life cycle of the firefly is egg, larva, pupa, adult.

Learning About Ladybugs



Ladybugs eat aphids. Ladybugs live throughout the world in gardens where they can find food and where the female can lay her eggs. Ladybugs are red with black spots. Some can be orange with yellow spots, some can be black with white spots, and some can have no spots at all. A female ladybug lays up to 1000 eggs in its lifetime. Male ladybugs are usually smaller than the female. The life cycle of a ladybug is egg, larva, pupa, and adult.

An Interesting Insect- Damselfly



The damselfly is found in most parts of the world, around freshwater ponds, streams, and lakes. Their close relatives are dragonflies, except they have many differences. Damselflies have 2 pairs of wings (the front and hind wings are the same size), 2 compound eyes, and an exoskeleton. They eat other insects. The lifecycle of a damselfly is: egg, nymph, adult. They are one of the oldest living creatures on earth. Europeans used to think that damselflies were harmful or evil.

Details about Dragonflies



The dragonfly is found in ponds in most parts of the world except Antarctica. It eats mosquitoes, bees, gnats, flies and sometimes frogs and fish.

Dragonflies can be blue, red, green and yellow.

The dragonfly goes through a complete metamorphosis. That means it goes through four stages. The stages are egg, larva, pupa and adult. What's interesting about the dragonfly is that their head can swivel all the way around. In many parts of the world they are used as food and medicine.

Luna Moth



Luna moths can be found from Canada to Northern Mexico. It's found on warm evenings in wooded areas. The adult luna moth has no mouth so it can't eat. It gains its nutrition when it is a caterpillar. The luna moth belongs to a group called Silk Moths. It can lay 150 to 250 eggs at one time. The males' antennae can find the females five miles away. The luna moth is one of the largest moths in North America.