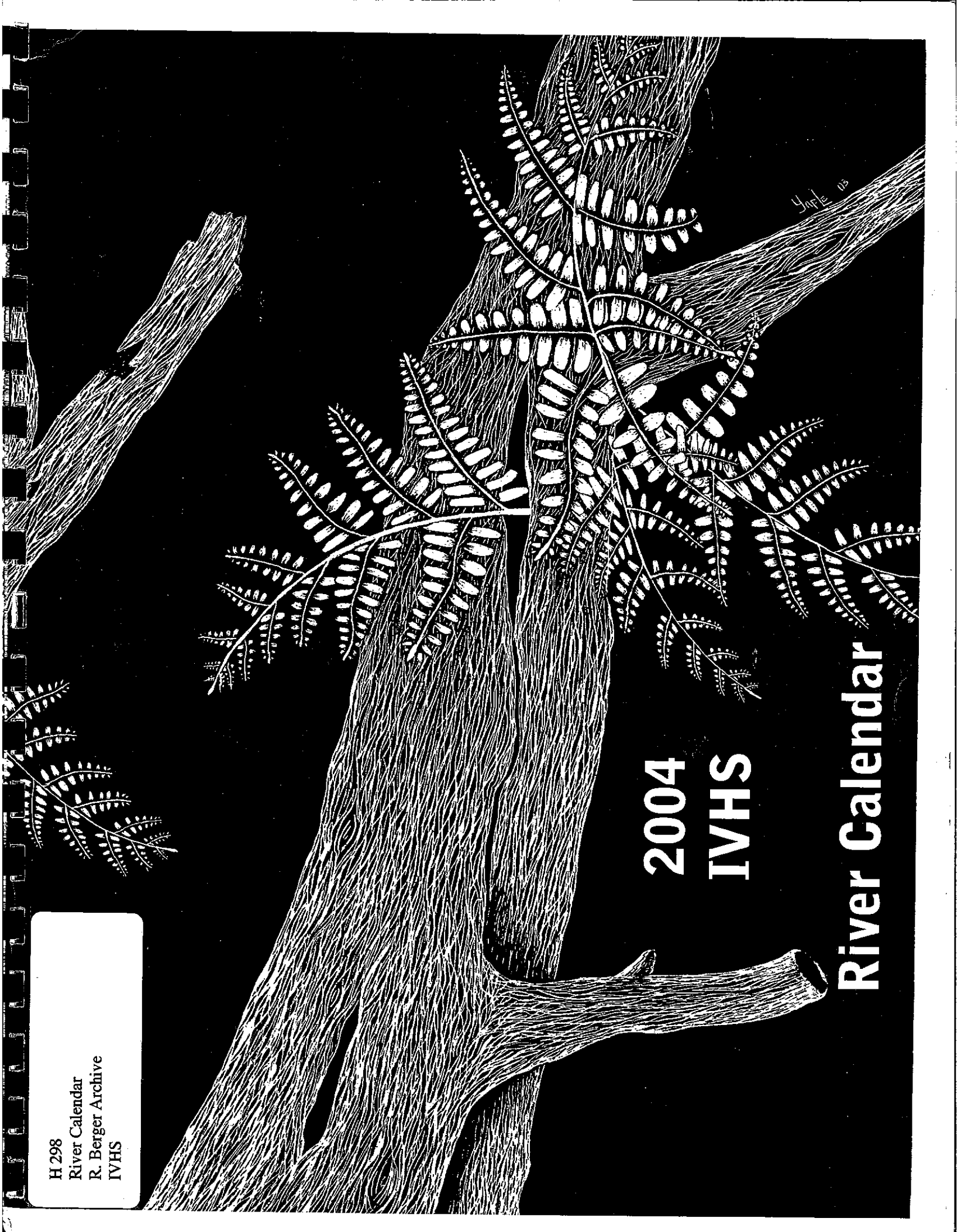


H 298  
River Calendar  
R. Berger Archive  
IVHS

2004  
IVHS

River Calendar



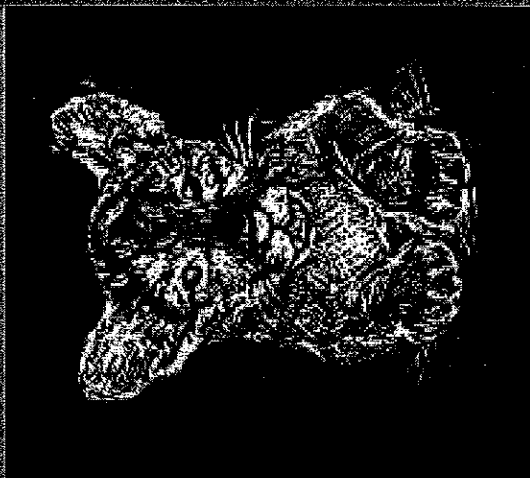
Key Cocker



# JANUARY 2004

Above: Scratchboard by  
Oley  
"Take off"

| SUN | MON                                    | TUE | WED | THU                 | FRI | SAT |
|-----|--|-----|-----|---------------------|-----|-----|
|     |  |     |     | 1<br>NEW YEAR'S DAY | 2   | 3   |
| 4   | 5                                      | 6   | 7   | 8                   | 9   | 10  |
| 11  | 12                                     | 13  | 14  | 15                  | 16  | 17  |
| 18  | 19                                     | 20  | 21  | 22                  | 23  | 24  |
| 25  | 26<br>MARTIN LUTHER<br>KING, JR.'S DAY | 27  | 28  | 29                  | 30  | 31  |



These are my kittens.  
The kittens are swimming here.  
The kittens are swimming.  
Bella, 4/10/10

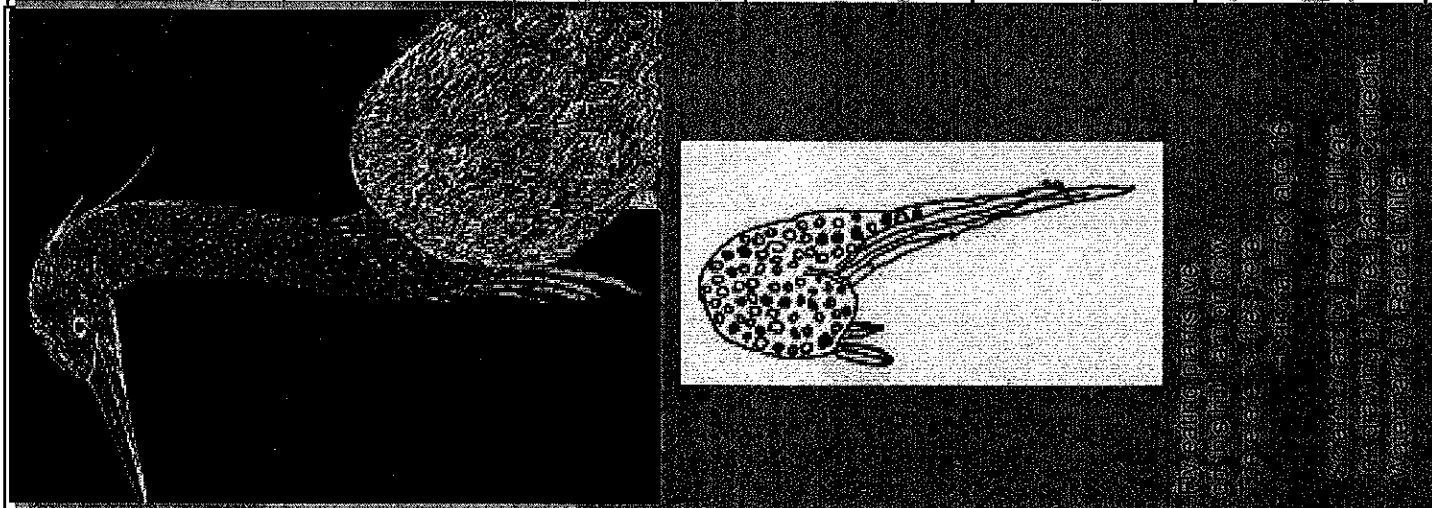


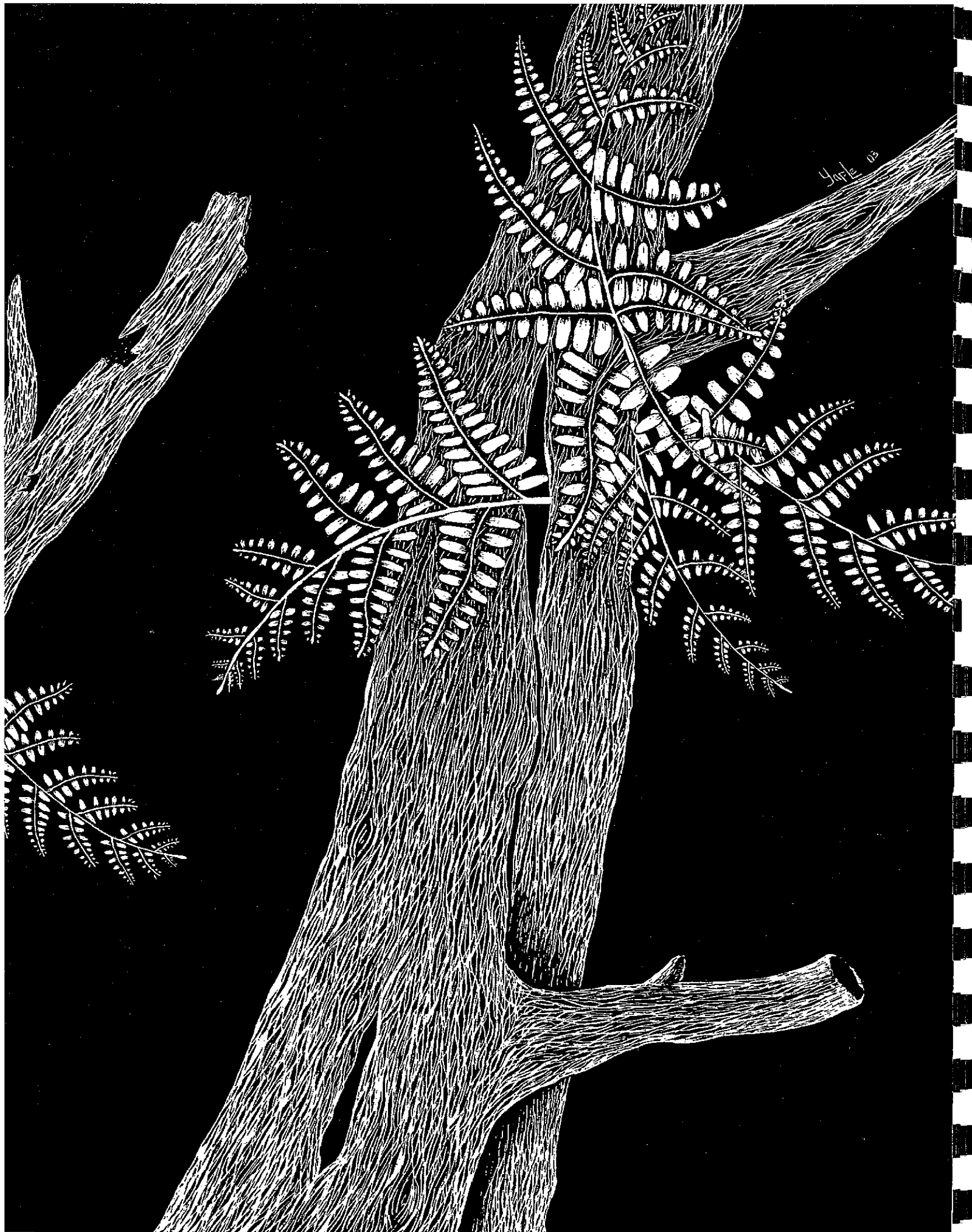
Scratchboard by Tammy Kim  
Bella, 4/10/10  
Bella, 4/10/10



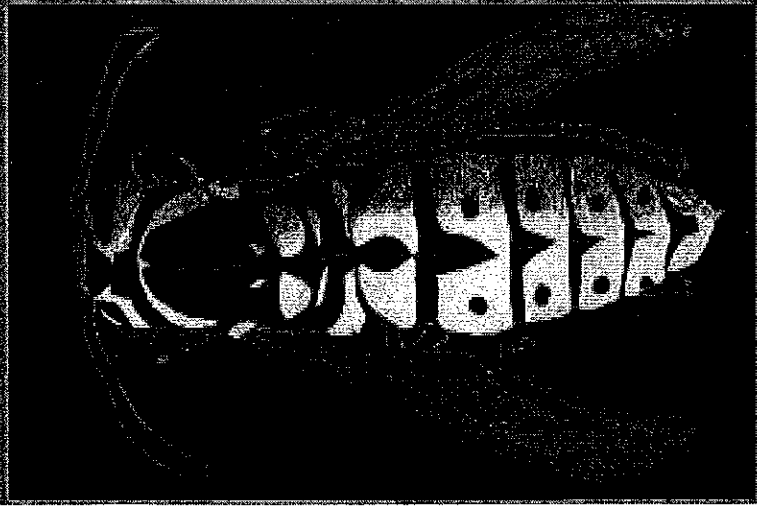
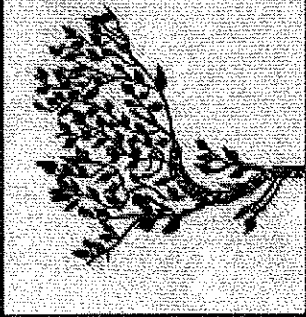
Above:  
Scratchboard by  
Caylee  
11th Grade

| SUN | MON | TUE | WED | THU | FRI | SAT |
|-----|-----|-----|-----|-----|-----|-----|
| 1   | 2   | 3   | 4   | 5   | 6   | 7   |
| 8   | 9   | 10  | 11  | 12  | 13  | 14  |
| 15  | 16  | 17  | 18  | 19  | 20  | 21  |
| 22  | 23  | 24  | 25  | 26  | 27  | 28  |
| 29  |     |     |     |     |     |     |





"Six feet" came over the land and was  
 beautiful, attracted, and so was today. It  
 came again and I realized that the true  
 details that make this place what it is, will  
 always change, but the feeling, the  
 laughter, and the good times that are here  
 will never change.  
 - Clay Reynolds, age 12



"Scratching" by John Dwyer  
 "Scratching" by Sarah LaValentine  
 "Scratching" by John Dwyer

# MARCH 2004

Above: Scratchboard by  
 Jillian  
 12th Grade

| SUN | MON | TUE | WED | THU | FRI | SAT |
|-----|-----|-----|-----|-----|-----|-----|
|     | 1   | 2   | 3   | 4   | 5   | 6   |
| 7   | 8   | 9   | 10  | 11  | 12  | 13  |
| 14  | 15  | 16  | 17  | 18  | 19  | 20  |
| 21  | 22  | 23  | 24  | 25  | 26  | 27  |
| 28  | 29  | 30  | 31  |     |     |     |



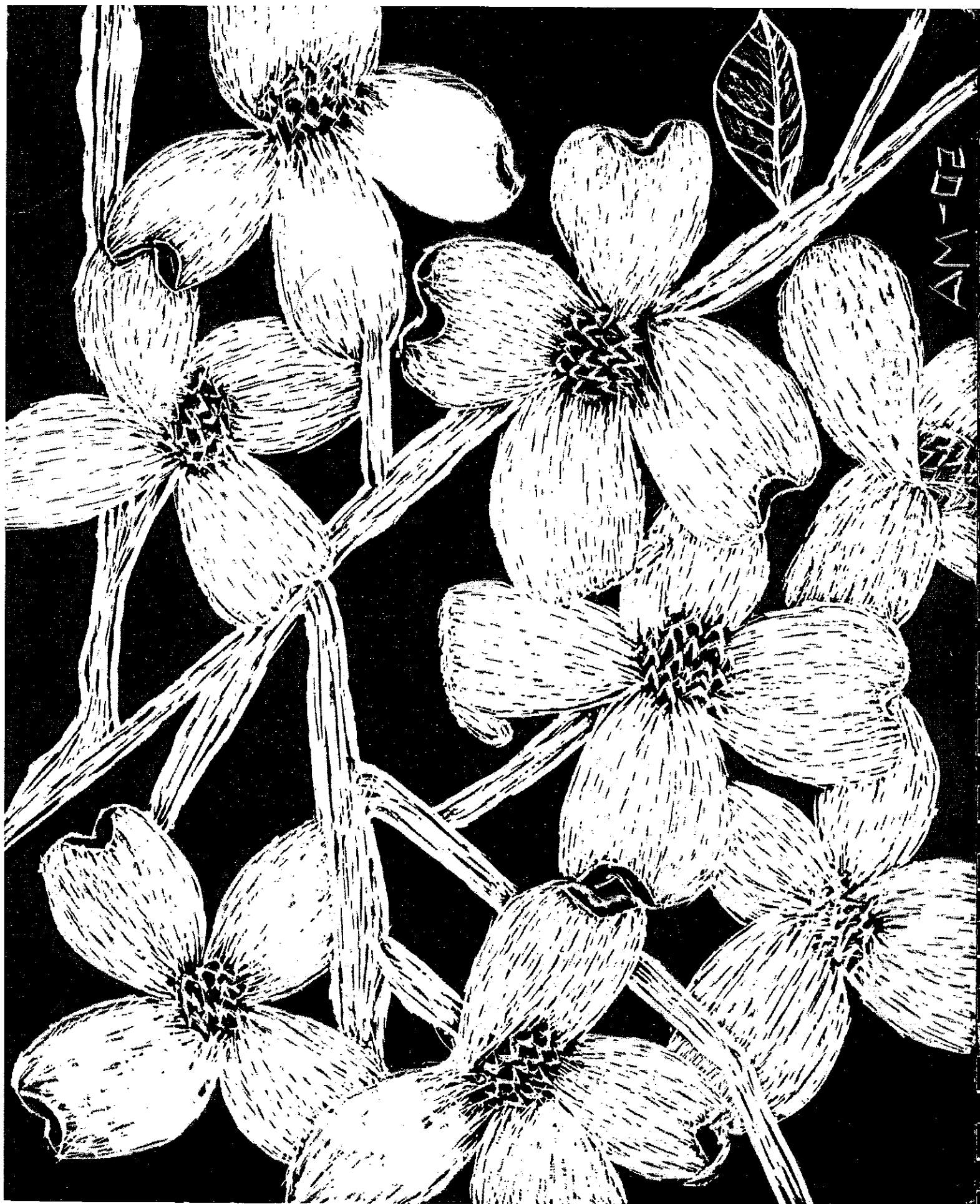


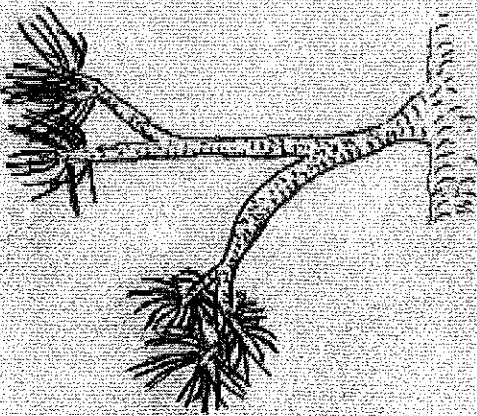




# APRIL 2004

| SUN          | MON | TUE | WED | THU                   | FRI              | SAT |
|--------------|-----|-----|-----|-----------------------|------------------|-----|
|              |     |     |     | 1<br>APRIL FOOL'S DAY | 2                | 3   |
| 4            | 5   | 6   | 7   | 8                     | 9<br>GOOD FRIDAY | 10  |
| 11<br>EASTER | 12  | 13  | 14  | 15                    | 16               | 17  |
| 18           | 19  | 20  | 21  | 22                    | 23               | 24  |
| 25           | 26  | 27  | 28  | 29                    | 30               |     |





Please write  
 your name and  
 age in the box  
 below.

Above: Scratchboard by  
 Andi  
 11th Grade  
 "Dogwood Branches"

# MAY 2004

| SUN                | MON | TUE          | WED | THU | FRI | SAT |
|--------------------|-----|--------------|-----|-----|-----|-----|
|                    |     |              |     |     |     | 1   |
| 2                  | 3   | 4            | 5   | 6   | 7   | 8   |
| 9                  | 10  | 11           | 12  | 13  | 14  | 15  |
| MOTHER'S DAY<br>16 | 17  | 18           | 19  | 20  | 21  | 22  |
| 23                 | 24  | 25           | 26  | 27  | 28  | 29  |
| 30                 | 31  | MEMORIAL DAY |     |     |     |     |



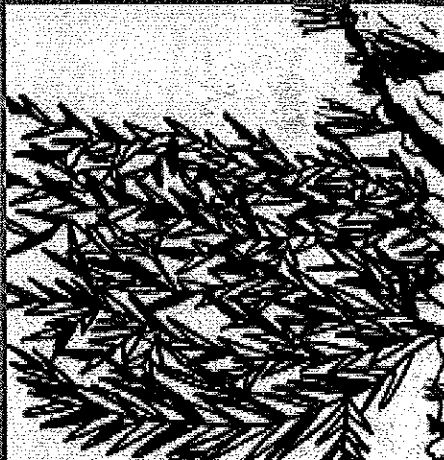


Photo by 16 year old  
student's entry from  
myrae 2003-04  
© 2004 Back 2003

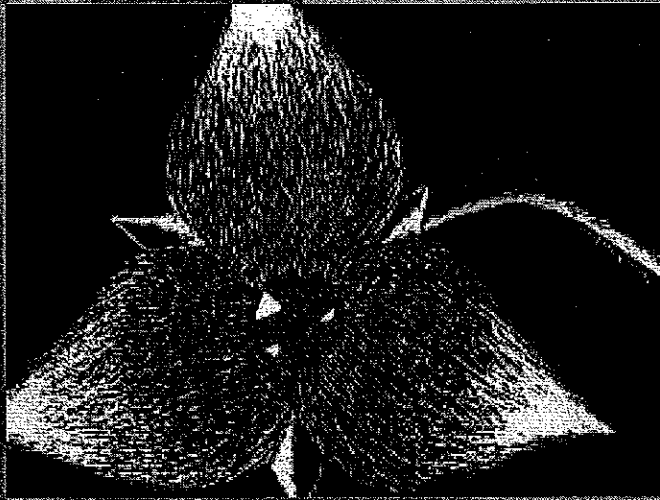


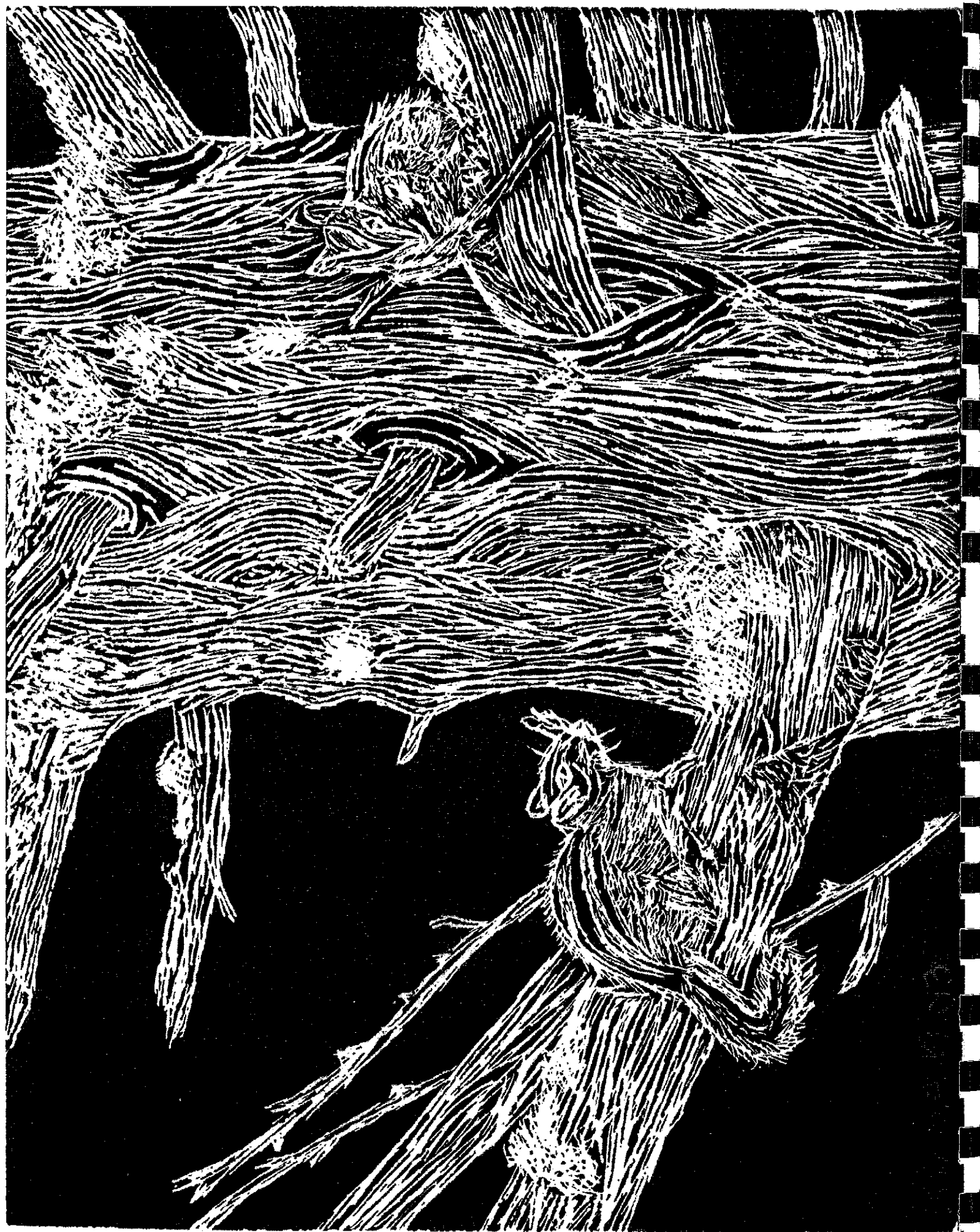
Photo by 16 year old  
student's entry from  
myrae 2003-04  
© 2004 Back 2003

Above: Scratchboard by  
Kira  
11th Grade  
"Trillium Field"

# JUNE 2004

| SUN                | MON | TUE | WED | THU | FRI | SAT |
|--------------------|-----|-----|-----|-----|-----|-----|
|                    |     | 1   | 2   | 3   | 4   | 5   |
| 6                  | 7   | 8   | 9   | 10  | 11  | 12  |
| 13                 | 14  | 15  | 16  | 17  | 18  | 19  |
| 20                 | 21  | 22  | 23  | 24  | 25  | 26  |
| FATHER'S DAY<br>27 | 28  | 29  | 30  |     |     |     |





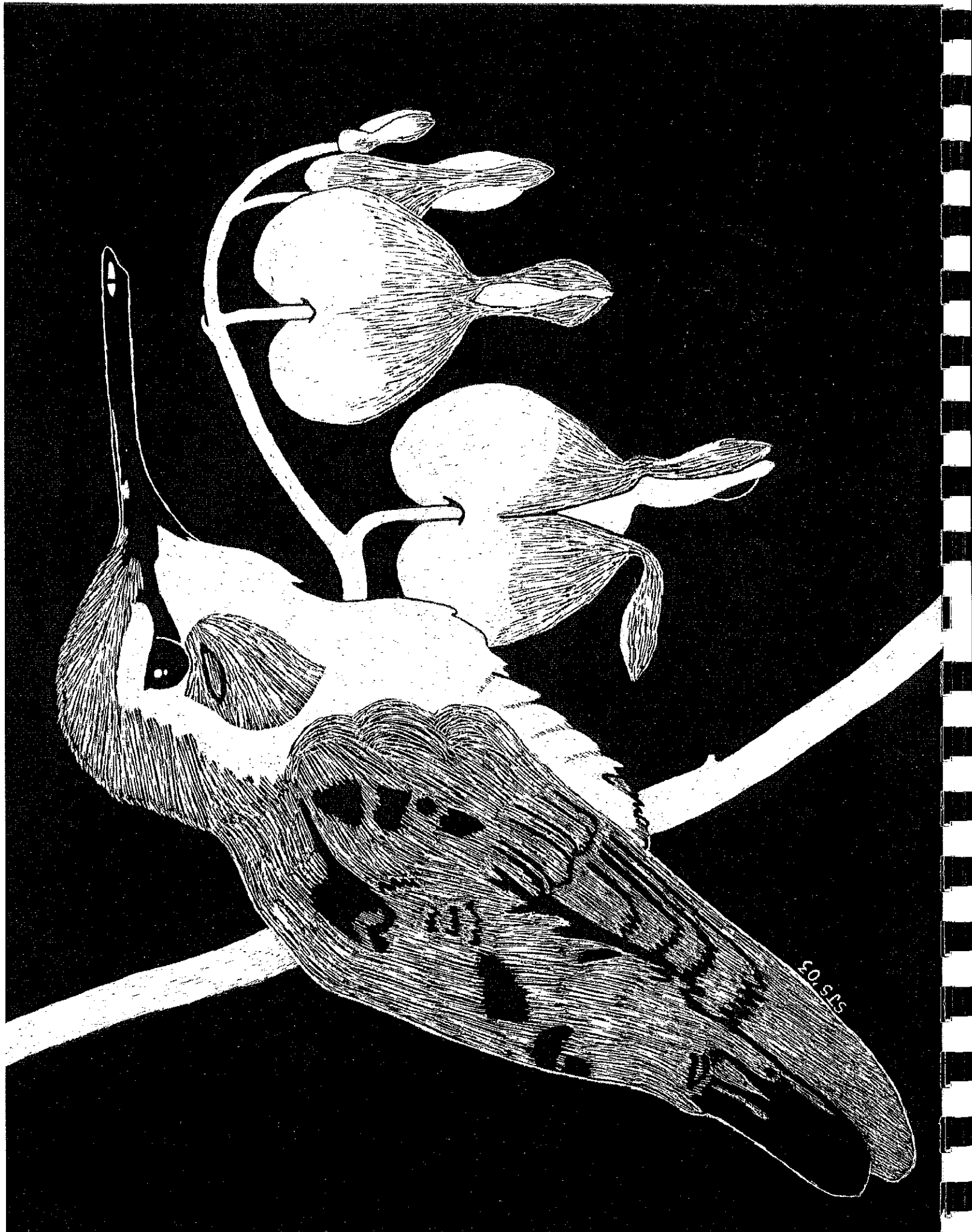
**JULY**  
**2004**

| SUN | MON | TUE | WED | THU | FRI | SAT |
|-----|-----|-----|-----|-----|-----|-----|
|     |     |     |     | 1   | 2   | 3   |
| 4   | 5   | 6   | 7   | 8   | 9   | 10  |
| 11  | 12  | 13  | 14  | 15  | 16  | 17  |
| 18  | 19  | 20  | 21  | 22  | 23  | 24  |
| 25  | 26  | 27  | 28  | 29  | 30  | 31  |

[illegible]

**SPECIAL ADVERTISING SECTION**





Being a garden, I guess I can't feel  
 any more like a garden.  
 For a long time I've been orange  
 like the color of dirt all over  
 dead rose, dead plants, dead grass  
 A monster is how I feel  
 Sweeping through this landscape  
 Consuming all the trees  
 and then springing out the blackest of  
 black  
 Imagine just a few months ago the life  
 that was flourishing in these  
 vast mountain  
 Now it's just a new, beginning with  
 low blades of grass sprouting from the  
 darkness of the earth  
 Give me a piece that inhabits  
 human world of land  
 This is the land that has made up some  
 a big part of my life  
 When I gaze at this barren landscape  
 see home in this low  
 Vastness I see a loss I've been spared  
 and a part of the day this forest will  
 be remembered with new life  
 More beautiful than before  
 (East Street, page 17)

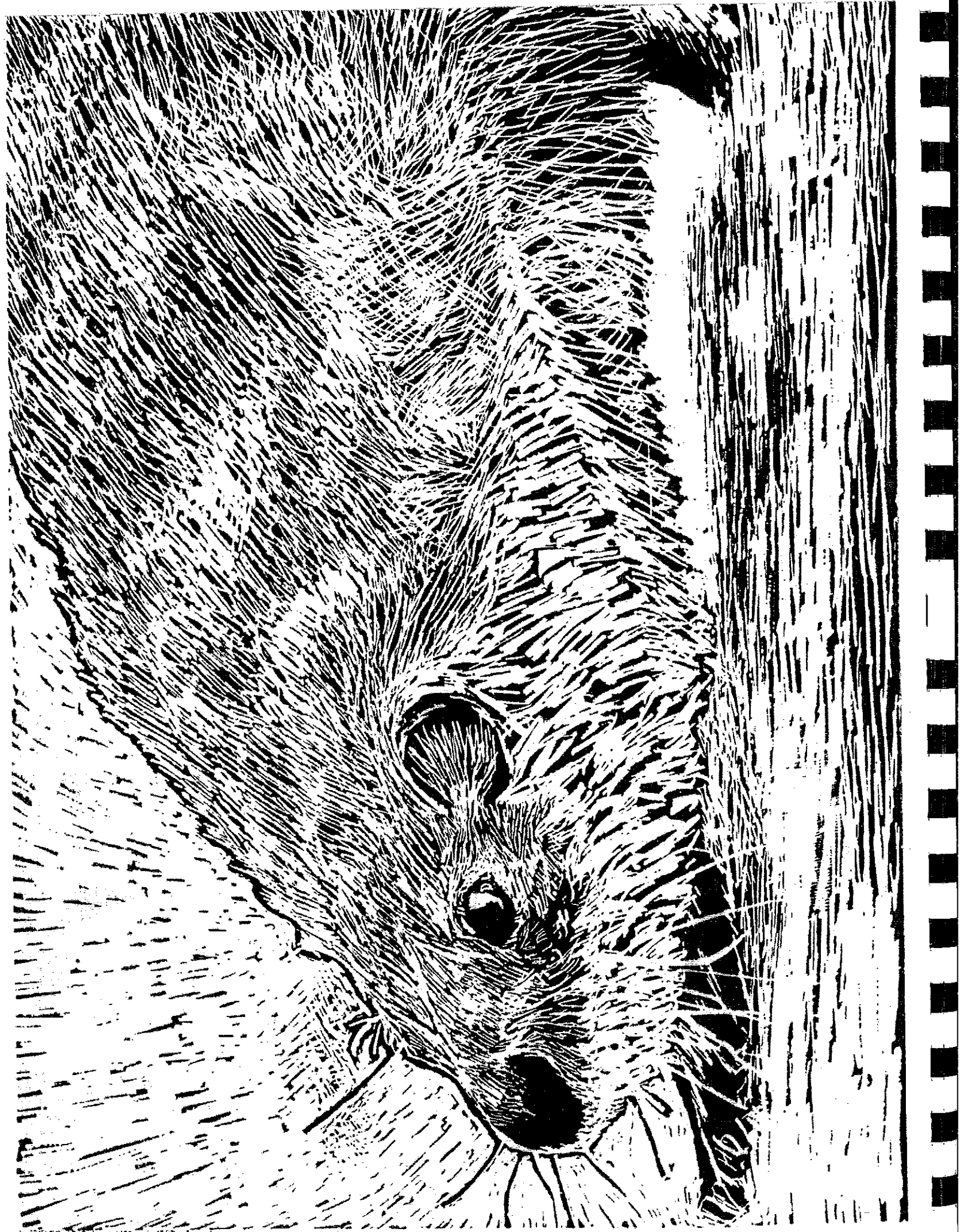


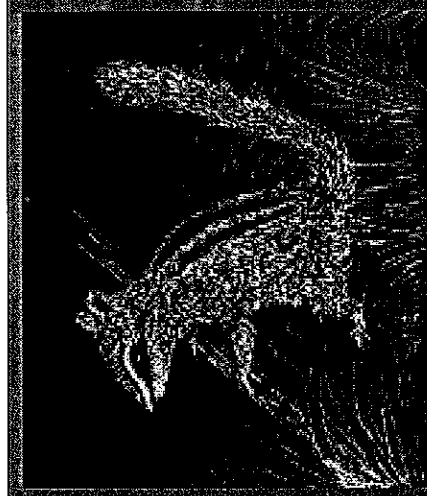
Garden  
 by David Foran

Above: Scratchboard by  
 Steven  
 11th Grade  
 "Hummingbird"

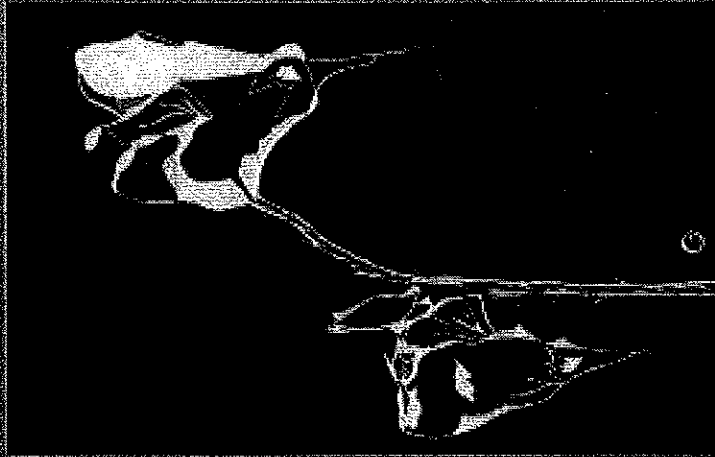
# AUGUST 2004

| SUN | MON | TUE | WED | THU | FRI | SAT |
|-----|-----|-----|-----|-----|-----|-----|
| 1   | 2   | 3   | 4   | 5   | 6   | 7   |
| 8   | 9   | 10  | 11  | 12  | 13  | 14  |
| 15  | 16  | 17  | 18  | 19  | 20  | 21  |
| 22  | 23  | 24  | 25  | 26  | 27  | 28  |
| 29  | 30  | 31  |     |     |     |     |





in the old log, jump  
are the spring blue plains, tick green  
the east. ALIVE  
Pam Phillips, age 16

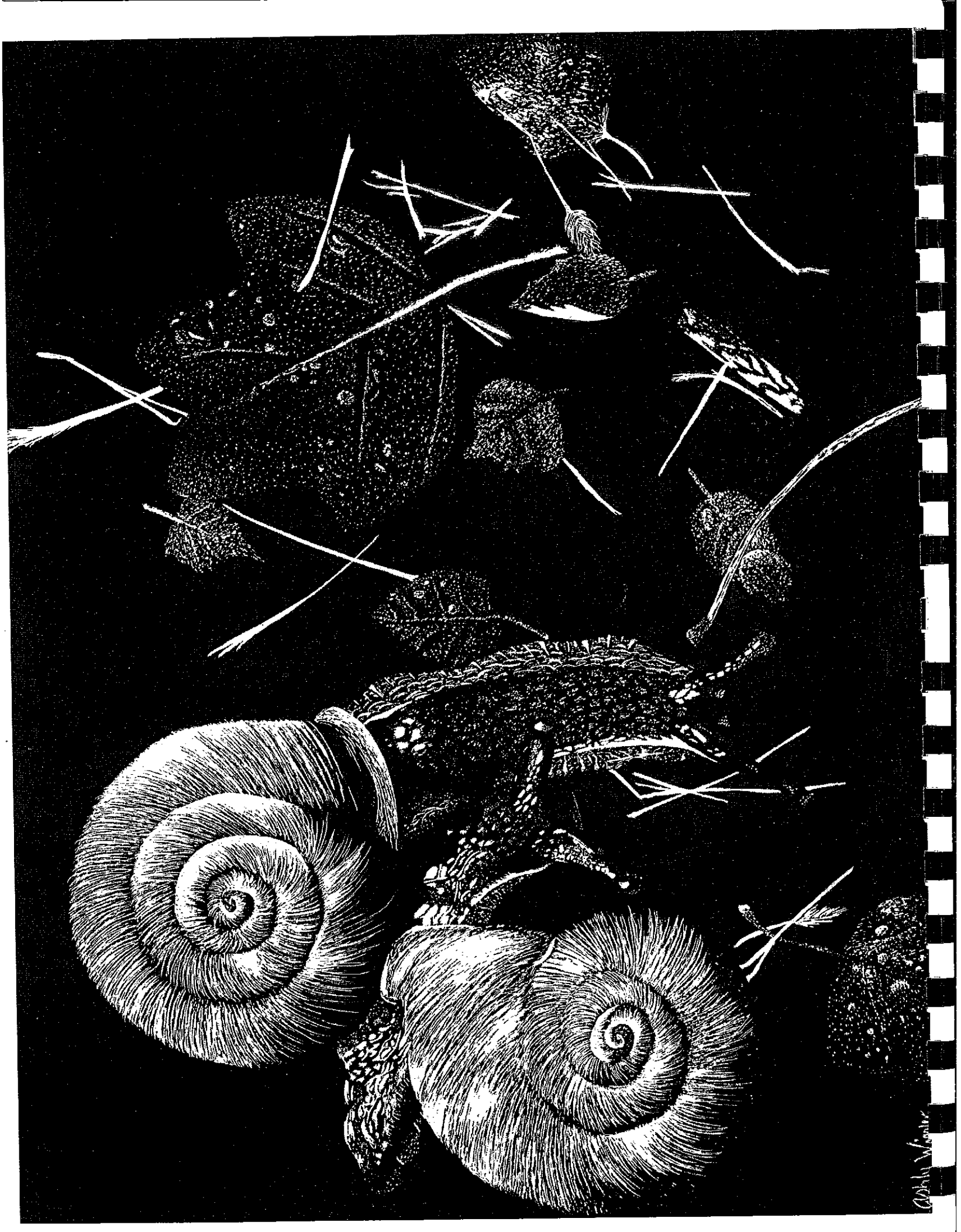


pieces presented  
board by Shari Bimble  
Pam Phillips, age 16

# SEPTEMBER 2004

Above:  
Scratchboard by  
Damian  
"Otter"

| SUN | MON | TUE | WED | THU | FRI | SAT |
|-----|-----|-----|-----|-----|-----|-----|
|     |     |     | 1   | 2   | 3   | 4   |
| 5   | 6   | 7   | 8   | 9   | 10  | 11  |
| 12  | 13  | 14  | 15  | 16  | 17  | 18  |
| 19  | 20  | 21  | 22  | 23  | 24  | 25  |
| 26  | 27  | 28  | 29  | 30  |     |     |

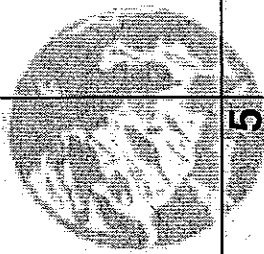


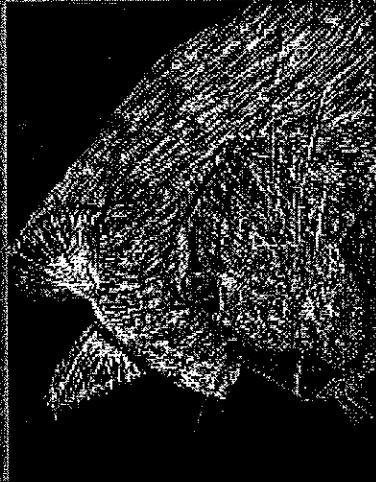
Arthur W. Foster



Above:  
Scratchboard by  
Ashly  
10th Grade  
"Forest Floor"

# OCTOBER 2004

| SUN          | MON          | TUE  | WED | THU | FRI | SAT |
|--------------|--------------|--|-----|-----|-----|-----|
|              |              |  |     |     | 1   | 2   |
| 3            | 4            | 5  | 6   | 7   | 8   | 9   |
| 10           | 11           | 12   | 13  | 14  | 15  | 16  |
|              | COLUMBUS DAY | 19   | 20  | 21  | 22  | 23  |
| 17           | 18           | 26   | 27  | 28  | 29  | 30  |
| 24           | 25           |  |     |     |     |     |
| 31 HALLOWEEN |              |  |     |     |     |     |



It's a winter's chill,  
Leaves fall to the ground.  
—Samantha Wilson, age 16

Salmon are swimming  
The water is flowing down  
The tree is blowing  
—Wren, age 10



Scratchboard by  
Ashly, 10th Grade  
"Forest Floor"

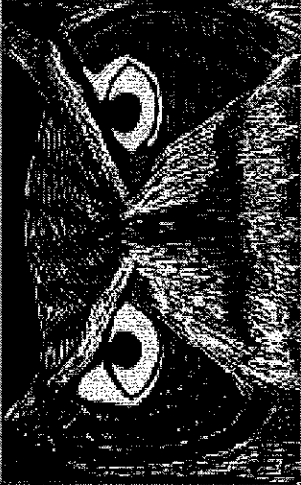




Above:  
Scratchboard by  
Kelsi  
12th Grade  
"Going home"

# NOVEMBER 2004

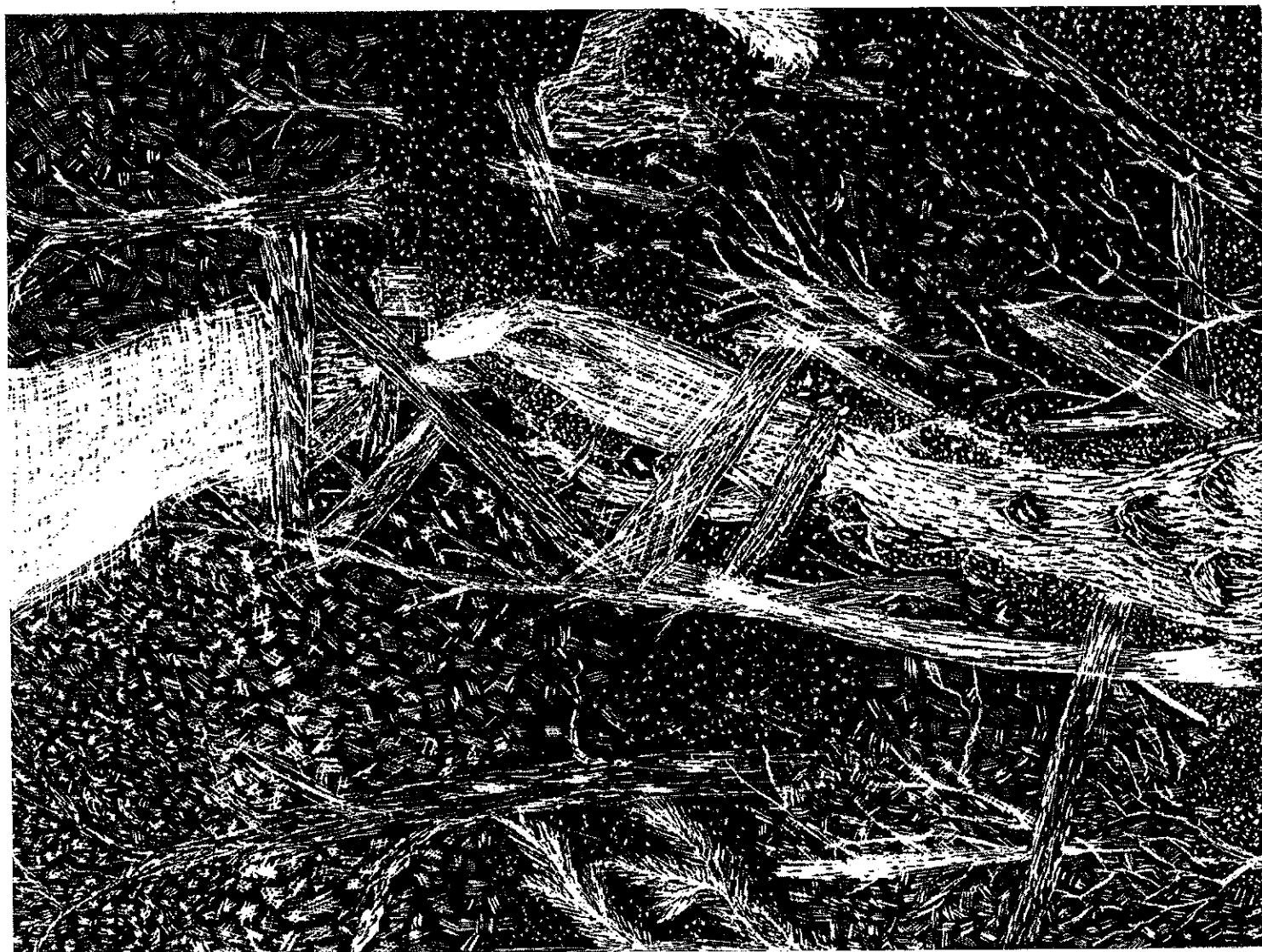
| SUN | MON | TUE | WED | THU                | FRI | SAT |
|-----|-----|-----|-----|--------------------|-----|-----|
|     | 1   | 2   | 3   | 4                  | 5   | 6   |
| 7   | 8   | 9   | 10  | 11                 | 12  | 13  |
| 14  | 15  | 16  | 17  | 18<br>VETERANS DAY | 19  | 20  |
| 21  | 22  | 23  | 24  | 25                 | 26  | 27  |
| 28  | 29  | 30  |     | THANKSGIVING       |     |     |

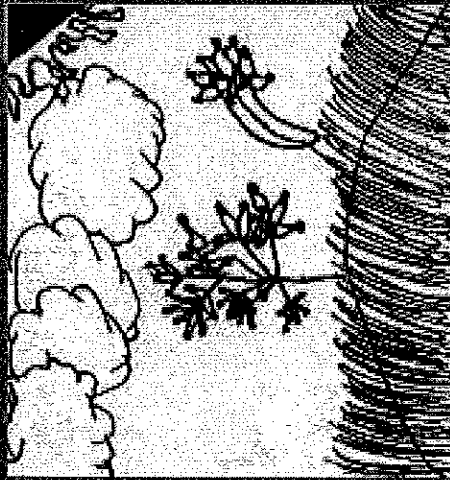
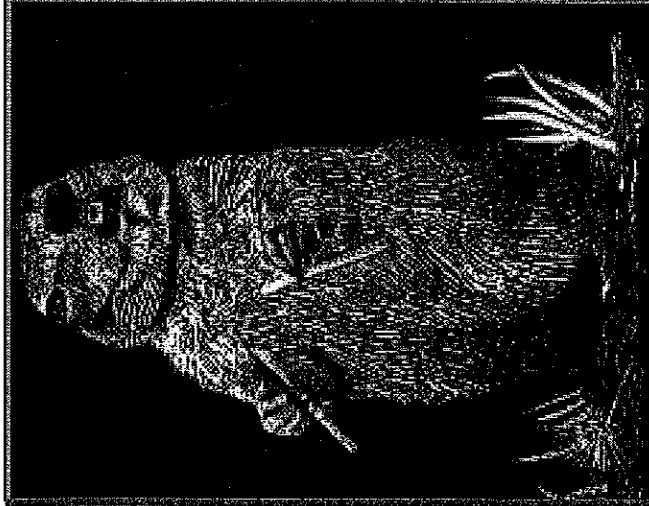


It was a good day. We spent the morning  
spending time in the garden. I had a  
sudden idea to go to the library to see  
if I could find a book on the owl.  
I was so excited.



It was a good day. We spent the morning  
spending time in the garden. I had a  
sudden idea to go to the library to see  
if I could find a book on the owl.  
I was so excited.





Fish in the water  
 Swimming against the current  
 Soon they will be able  
 to save their  
 lives.

Scratchboard by user Hubbard  
 Ink Drawing by Boon  
 Watermark by Michele Hidalgo

Above:  
 Scratchboard by  
 Megan  
 11th Grade  
 "Creek"

# DECEMBER 2004

| SUN | MON | TUE | WED | THU | FRI | SAT       |
|-----|-----|-----|-----|-----|-----|-----------|
|     |     |     | 1   | 2   | 3   | 4         |
| 5   | 6   | 7   | 8   | 9   | 10  | 11        |
| 12  | 13  | 14  | 15  | 16  | 17  | 18        |
| 19  | 20  | 21  | 22  | 23  | 24  | 25        |
| 26  | 27  | 28  | 29  | 30  | 31  | CHRISTMAS |

This is the fifth calendar produced through the IVHS River Calendar Project. Elaine Barker and Jim Hutchins took the first group of IVHS art students, Fishwatch members and Mr. Linnemeyer's 3<sup>rd</sup> grade class from Evergreen to the Forks in the spring of 1998. Since then hundreds of students have participated in various aspects of this program.

This calendar represents the work of 2 years of the project. This fall 4<sup>th</sup> grade students in Mrs. Shinerock's class visited the river with members of the IVHS Art Share class. The Art 1 students from the high school visited Wild Life Images in Grants Pass and took photos to start an original bank of images to use as references for their drawings.

Also, featured in this edition is work that was done in the fall of 2002. Art 1 and Art Share students took 30 members of Ms. Dudley's art class from Lorna Byrne Middle School to the same location on the river to write, draw and learn about the river habitat.

The grade or age designated on the work inside reflects when the work was done, not necessarily the age of the student now.

Proceeds from the sale of these calendars fund all of these field trips and ensure the future of the project and others that provide art experiences within the community.

\* Special thanks to Megan Wilkinson and her mother, Patty Calver, for the time and expertise they lent to the technical aspects of the production of this calendar.

\* Cover design by Jillian

Gail

