



LINTEL

A horizontal section
(made of iron, stone,
wood...) above a window
that supports the weight
of the wall directly above
it.

*"It looks like it can be
taken apart. My painting
of the lintel is cool and
colorful."*

~ Brian



CORINTHIAN COLUMN

The capital is the very top of the Corinthian column. It is characterized with leaves, tiny spirals, and other decorations. It is the fanciest of the three Greek style columns.

~ Natalie



URN

An urn is a decorative sculpture that takes the shape of a wine cup with a lid that can be found inside or outside of a building.

"I like the urn because it is beautiful and cool."

~ Elijah



QUOIN WORK

Quoin work is on the side of building usually stone blocks from the bottom to the top.

"I see this feature when I look out the window of my car driving around Rochester."

~ Sam



ROUND ARCHED
WINDOWS with a BELT
COURSE

A semi-circular arch
above a rectangular
window. The belt course
is the band of masonry
extending horizontally
across the façade (front).

~ Lydia



DORIC COLUMN

A decorative and functional feature that holds up part of a house. Related to Corinthian and ionic columns of Greek Revival style architecture.

"I like columns because they add a decorative touch to a home."

~ Serena



DOUBLE DOOR

A door consisting of two door sections
hinged on opposite sides.

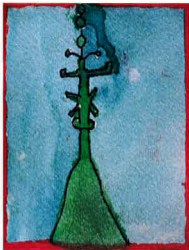
~ Jessica



OCTAGONAL ROOF

An eight sided roof on top of a tower. Towers are characterized by their relatively great height as compared to its horizontal dimensions.

"This feature is fun to draw, because when I draw it, it almost looks 3-D."
~ Katherine



FINIAL

An ornament that ends the point of a pediment, spire or other similar structures.

"I like the finial because it is a decoration, so there are infinite ways to design it."

~ Theo



SQUARE TOWER

A tall, square, thin section of a building.

"I like square towers because of their height."

~ Shawn



IONIC COLUMN

The top most part of the column (capitol) with spiral, circular designs on the sides.

"This feature is awesome because of the cool, spiral designs."
~ Connor



MANSARD ROOF

A hipped roof with curved sides leading to a flat section of the roof.

Often found with decorative shingles and roof fences.

"I enjoyed drawing this feature because it is found on Second Empire style houses."

~Peter



PORTICO

A covered entrance having a roof supported by columns, commonly at the front entrance to a building.

"The portico that I drew, and the type on the White House remind me of the Parthenon in Greece. I like this feature because it's very elegant and precise."

~Olivia



ROUND ARCHED WINDOW

A window with a semi-circular arch at the top.

"The window I drew is triple arched."

~Grace



SIDE LIGHTS

A framed area of glass made of a number of small panes, set vertically on each side of a door.

"I really like the stained glass because of the color used in some side lights.

~Tasha

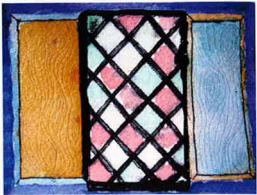


FISH SCALE SHINGLES

Overlapping rows of shaped tiles or shingles that resemble overlapping fish scales; often used in the Queen Anne style.

"I really like the overlapping shingles, they remind me of a rainbow trout."

~Cameron



CASEMENT WINDOW

A window made of many glass rhombuses. In Colonial America casement windows with diamond shapes were popular.

*"I saw casement windows on
Paul Revere's house!"*

~David



FAN LIGHT

A semi-circular window over a door;
commonly with radiating rods, like rays of a
sun or fan.

*"A fanlight looks like a protractor. I saw a
fanlight on our field studies to Corn Hill and
Park Avenue area of Rochester."*

~Taylor

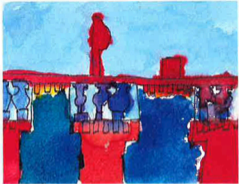


CUPOLA

A structure on a roof or dome often set on a circular or polygonal base at the ridge of a roof used for light and ventilation.

"I like the cupola because it reminds me of where Rhoda lives on the Mary Tyler Moore show."

~Emma

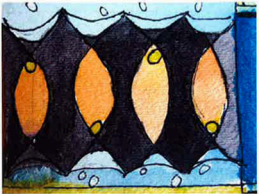


DENTIL MOLDING

Molding with individual small, square, tooth-like blocks that form a decorative line near the top of a building.

"I like this feature because it looks proud and stately. In fact, it is on the White House."

~ Webster



SIDE LIGHTS

A framed area of glass made of a number of small panes, set vertically on each side of a door.

"I really like the stained glass because of the color used in some side lights.

~Tasha



ROOF CRESTING

A decorative board or metal strip along the ridge of a roof. Roof cresting is generally highly decorative with repeating cutouts.

"One thing I liked about roof cresting is that it seems to give an eerie mood, like gargoyles."

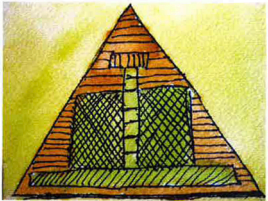
~ Noah



FRIEZE WINDOWS

“Lay on your belly windows” are one of a series of small windows that form a horizontal band near the top of the building. Often found in Greek Revival style architecture.

~ Maya

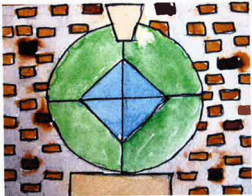


PALLADIAN WINDOW

A large window divided into three parts, a bigger window and two smaller ones.

"I like this feature because the pattern of lines remind me of cross hatching."

~Finn



BULLS-EYE WINDOW

A round or oval shaped window most often used in doors, gables or pediments (also known as an oculus).

"I like this feature because it could be made in many different ways."

~ Dominique