

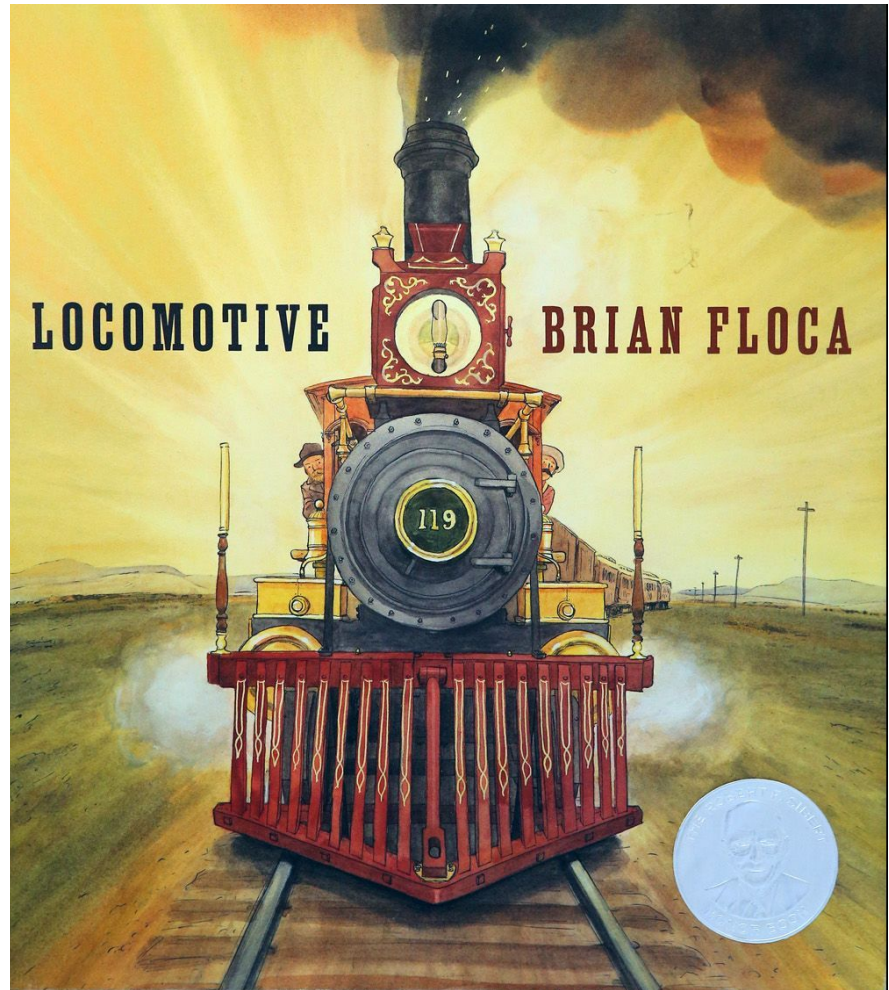
# Trains Trains and more Trains

Identifying shapes to draw

A dark blue diagonal gradient bar that starts from the bottom left corner and extends towards the top right corner, covering the lower half of the page.

# Learning Target

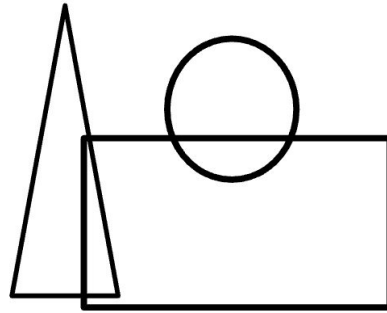
I can draw a detailed locomotive train by identifying basic lines and shapes.



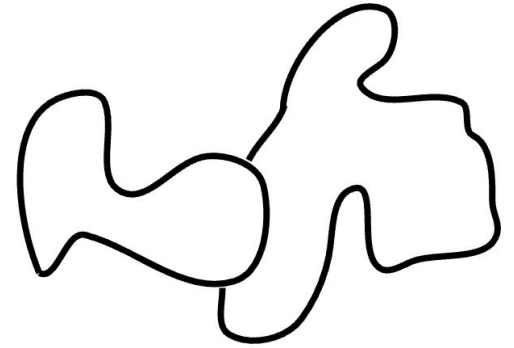
# Shape

A shape is a closed line.

Shapes can be  
geometric or organic



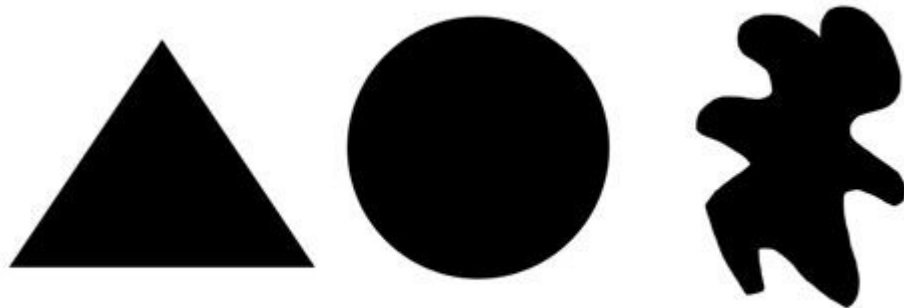
GEOMETRIC SHAPES



ORGANIC SHAPES

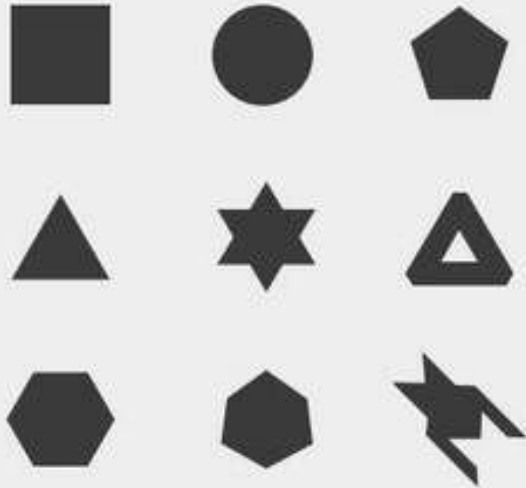
# The Element of Shape

a shape is an enclosed space,  
a bounded two-dimensional  
form that has both length and  
width.



# Geometric & Organic Shapes

Geometric shapes



Organic shapes



# Overall Triangle Shape

Step 1 - Draw a large triangle on your paper.

(Start your point from the top and draw down to the 1 inch from the bottom of your paper.)

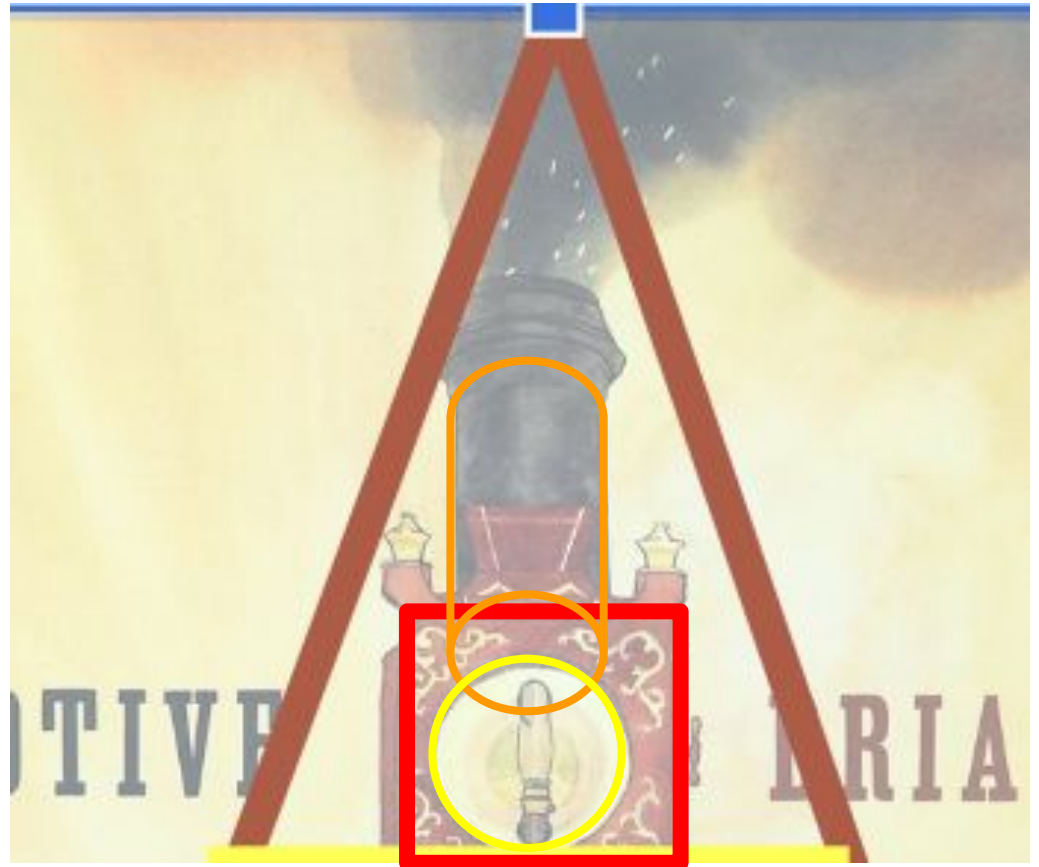


# Overall Triangle Shape

Step 2 - Divide your train into 3 separate parts.

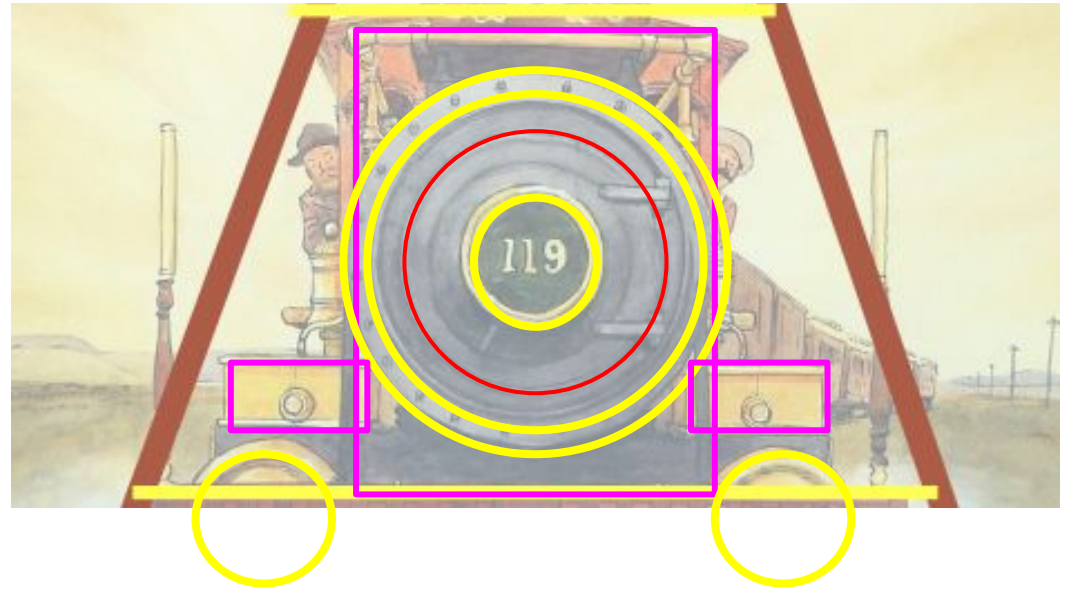


# Top Section

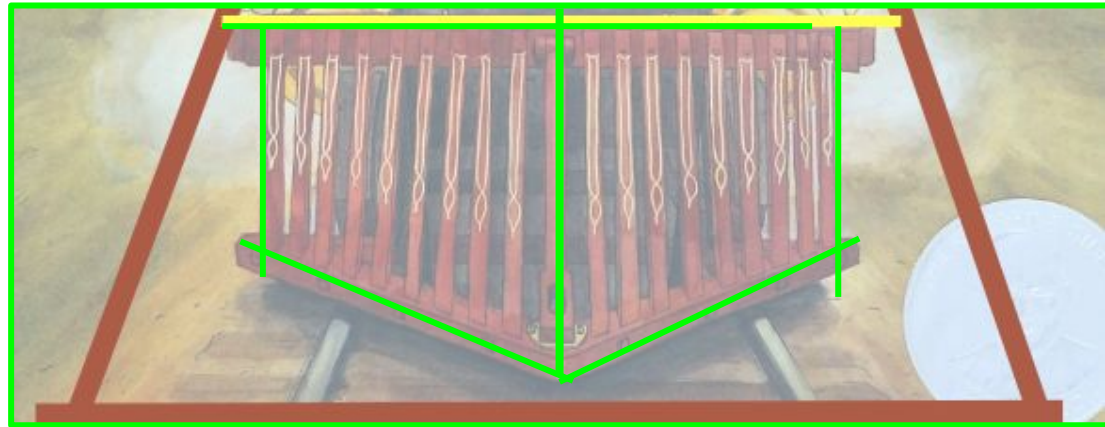




# Middle Section

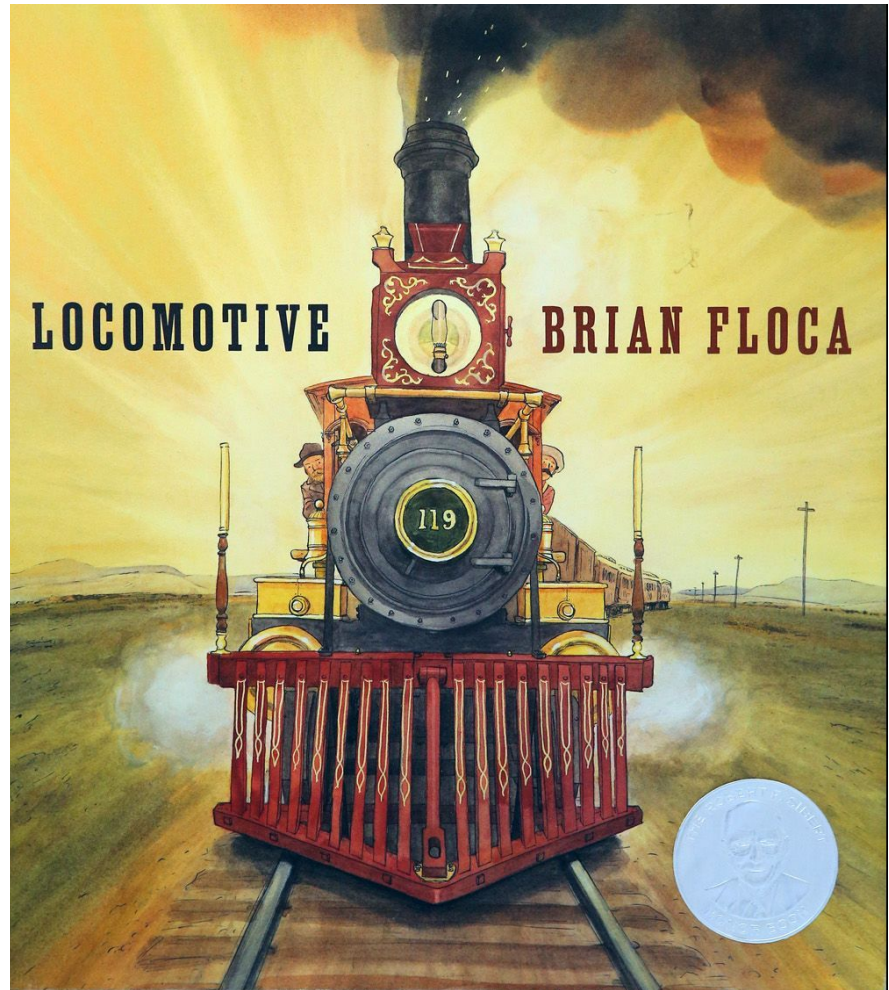


# Bottom Section



# Learning Target

I can thoughtfully add color to my locomotive drawing that features the train.



# Color

Think about how your color choices can make your locomotive stand out.

